

Northern Indiana Pastel Society

Member of International Association of Pastel Societies, IAPS • Nipastelsociety.org

February 2010

Meeting

1 p.m. Sunday, Feb. 21

Studio Art Classes

4609 Grape Road, Mishawaka, Ind.

Donations of cookies, cheese and crackers, fruit, etc. for our refreshment table are welcome.

Our business meeting will be followed by a pastel demonstration by Susan M. Henshaw



Green Wave

A lifetime resident of Union Pier, Mich., Susan Henshaw (susanhenshaw.com) has won awards for her pastels at the regional competition at Midwest Museum of American Art in Elkhart, the Michiana Annual Art Competition at the Box Factory as well as many other competitions. She is particularly known for her large pastels of Lake Michigan. She also works in photography, painting, abstract drawing and portraits. She was artist-in-residence at Sleeping Bear Dunes National Park in 2005 and at the Porcupine Mountains State Park in 2007, both in Michigan.

She has a solo show that includes 12 new pastel paintings through March 1 at the Vickers Theatre, Three Oaks, Mich., and a solo photography show through April 30 at The Phoenix Café, Benton Harbor. She has work in current group shows at Lubeznik Center, Michigan City, and Krasl Art Center, Saint Joseph. Her studio is at the Box Factory for the Arts, St. Joseph, Mich.

Please pay 2010 dues

Please bring your payment to the meeting, or write a check to *Northern Indiana Pastel Society* and mail to treasurer **Sue Coultas**, 519 Woodruff, Niles, MI, 49120. Please update your email address and other contact info if you've made any changes. Dues remain at \$20 for 2010. A bargain! They are due by March 1.

Books for sale

Martha Hollett has some extra pastel books she will offer for sale at the meeting.

NIPS at South Bend Civic Theatre

Our exhibit at South Bend Civic Theatre continues through the production of *Little Shop of Horrors* March 5 to 21. A reception will be held 5-7 p.m. Friday, March 5 during the downtown art walk. All are welcome.

A total of 22 members are showing work:

Marie Arch, Donna Chambers, James F. Cooke, Susan Coultas, Mary Firtl, Barbara Fedder, Walter Gunn, Carol Heslop, William Jensen, Christine Jones, Gloria J. Kingery, Peg Luecke, Janice Marie, Jackie MacKenzie, Catherine McCormick, Mary Michalak, Phil Monteith, Cheryl Ann Spran, Barbara Gentner Stephenson, Peggy Vaughan, Robert R. Williams, and Mona Witt.

The theme is comedy and tragedy. Many members carried out the theme of theater through the titles and ideas they communicated in their art. A portion of the proceeds from sales will benefit South Bend Civic Theatre. The exhibit is geared to those attending the performances, so no separate viewing hours are scheduled, aside from the March 5 event.

Previous meeting

Our festive holiday potluck and art exchange was organized by **Barb Fedder** with help from **Barb Stephenson, Janice Lampos, Mary Michalak, Carol Heslop, Adham Halsaver** and others. The event was attended by 35 members and guests, and about 20 gifts changed hands, including many artistic gems and a few white elephants.

NIPS award at Scholastics show

Congratulations to **Kayli Decocker**, seventh grader at Grissom Middle School. She will receive

an award established by Northern Indiana Pastel Society for a student whose artwork in soft pastel has been chosen for the Scholastic Art Awards. Kayli also won a gold key award for her pastel, *Mask with Instrument*.

The Scholastics show represents students in grades 7 through 12 from 17 surrounding counties in Indiana and Michigan. The show features more than 400 works, and will be on display through March 6 at South Bend Museum of Art.

Mask with Instrument, pastel by Kayli Decocker, 7th grader at Grissom Middle School, winner of the NIPS award at the 2010 Scholastics Art Awards.

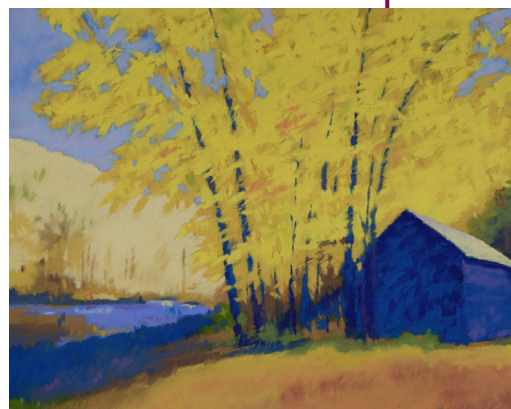
Member news

Mike Kelly

continues his winning ways with his top entry in the Creative Spark Award featured in the February *Pastel Journal*. His barn painting, *John Hartman's Place*, was chosen from 132 entries with a fall theme.

Mary Firtl is participating in an exhibit of creative work by staff members of the Saint Mary's College Integrated Marketing and Communications Department in the Cushman-Leighton Library. Mary is showing two pastels and some samples of her courtroom art from the Mike Tyson trial for CBS.

Mary Ann Pals has been invited to speak at the Great Lakes Pastel Society meeting in November in Grand Rapids. Meanwhile, Mary



John Hartman's Place

Ann will teach a six-week pastel class from 7 to 9 p.m. (CT) at the Chesterton Art Center starting March 18. Register at the art center (219) 926-4711. Fee: \$60 for members, \$65 non-members. Students will work from their own reference photos.

Workshops

Ron Monsma

Ron will offer a still life workshop May 14, 15, and 16 for the Chicago Pastel Painters. He also will jury the group's third biennial members exhibition to be held May 7 to June 13 at Renaissance Court Gallery, Chicago Cultural Center, 78 E. Washington St. Slide deadline, March 5. chicagopastelpainters.org/events

Michael Chesley Johnson

Nationally known pastelist Michael Chesley Johnson (michaelchesleyjohnson.com) will conduct a plein air workshop May 3-5 at the Art Barn School of Art, Valparaiso. Price: \$275. Info: ArtBarnIN@aol.com, (219) 462-9009, www.artbarnin.com

Also, Michael will conduct a workshop in Springfield, Ill., April 29–May 1, sponsored by Illinois Prairie Pastel Society. Price: \$250 for IPPS members, \$300 for others. Info: George King, Illinois Prairie Pastel Society, 2702 Johnstone Road, Springfield, IL 62711, (217) 483-9030, geezer222@comcast.net

Pastel Convention

Great Lakes Pastel Society will host a convention May 21, 22, and 23 at Eagle Crest Conference Resort, 1275 South Huron, Ypsilanti, Mich. Workshops and info sessions will be featured. GLPS.org

Exhibits

Pastels at Snite Museum

A number of fine pastels and charcoal drawings are on view in the show, *Expanding the Boundaries*, through Feb. 28 at the Snite Museum of Art, Notre Dame. From the collection Gabriel and Yvonne Weisberg of Minnesota, the works are by artists in France and Belgium in the late 19th and early 20th centuries. Snite hours: 10-4 Tuesday and Wednesday, 10-5 Thursday, Friday and Saturday, 1-5 Sunday.

C.F. Payne illustrator

The show continues through March 5 at the Ernestine M. Raclin School of the Arts Gallery, Indiana University South Bend.



Chris Fox Payne uses a mixed media technique. The exhibit will include more than 30 original works and studies. Payne is an artist-illustrator whose artwork has graced the covers of *Time*



Magazine, *Readers Digest*, *Sports Illustrated*, *The New York Times Book Review* and *Sunday Magazine*, *MAD Magazine* and books.

Ron Monsma recommends this show.

Fort Wayne Art Museum

The Fort Wayne Art Museum is being revamped and will open with a show of works by Andrew Wyeth, N.C. Wyeth and Jamie Wyeth March 26 to May 2. The Fort Wayne Museum of Art's **Contemporary Realism Biennial** Sept. 3 to Nov. 7 is a national invitational and juried exhibition highlighting American realism.

Works by contemporary masters of the field will anchor this exhibition, including: Audrey Flack, Caleb O'Connor, Luigi Benedicenti, and Ralph Goings. Deadline for the juried competition is April 2.

For entry forms, contact **Sarah Aubrey**, Curator of Exhibitions, at Fort Wayne Museum of Art, 311 East Main Street, Fort Wayne, IN 46802 or **biennial2010@fwmoa.org**.

Elkhart birthday party

All are invited to celebrate Elkhart Art League's 85th birthday at an open house 2 to 4 p.m. Sunday, March 21, at the Art League Building, 511 Baldwin St., Elkhart. Mixed media artist **Ellen Ridenour** will demonstrate batik techniques on silk scarves.

Need digital images of your art?

Baffled by digital photography? Wish you knew how people get their artwork on Web sites? Mona Witt will scan artwork for members to create digital images for Web sites and Arts Everywhere. If you already have digital images,

Mona would like them for the NIPS page on the Arts Everywhere Web site. Email Mona for the details: mona50@comcast.net

Pastel Pointers

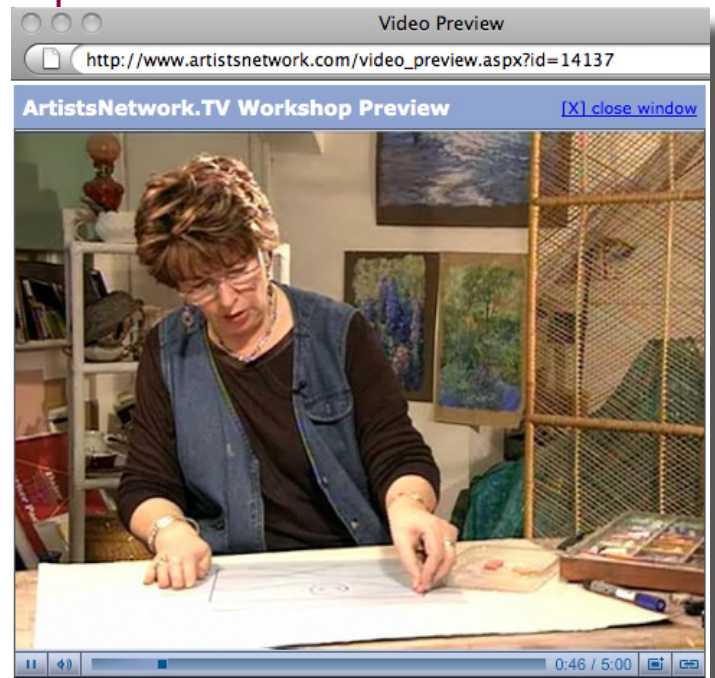
Pastel Journal offers comments by **Richard McKinley** at <http://pastel-pointers.pasteljournal.com/>.

ArtsEverywhere.

Mona Witt continues to send updates so the community can learn about our meetings and events at **artseverywhere.com**

Good Web site

Jan Gilbert recommends **artistsnetwork.tv**



It has samples of workshops you can watch to decide if you want to take the workshop. "Even though they are short demos, there is good information. They include different mediums and subject matter," she says.

Remember!

Northern Indiana Pastel Society Show Reception
5-7 p.m. Friday, March 5
South Bend Civic Theatre
403 N. Main St., South Bend