

Northern Indiana Pastel Society

Member of International Association of Pastel Societies, IAPS • Nipastelsociety.org
Email: NIpastel@aol.com • Registered on theartsmap.com

August 2010

Northern Indiana Pastel Society show
Sept. 1–30, 2010 • Spencer Gallery,
Lower level, downtown Mishawaka Library,
209 Lincoln Way East, Mishawaka

Receiving: 4–6 p.m. Tuesday, Aug. 31
Reception: 4–6 p.m. Thursday, Sept. 2
Releasing: 4:30–6 p.m. Thursday, Sept. 30

Larger works are welcome. They can be paintings that have been shown in previous exhibits. This show will serve our mission to educate the public about the medium of pastel.

Meeting

1 p.m. Sunday, Aug. 15, 2010

Studio Art Classes

JMS Plaza, 4609 Grape Road
Mishawaka, Ind.

(574) 243-2006

Donations of cookies, cheese and crackers, fruit, etc. for our refreshment table are welcome.

What I did on my summer vacation

A short business meeting will be followed by a show-and-tell session. Members and guests are invited to bring a work to show. Works in progress as well as finished paintings are welcome. We also will view some art by the late Harriet Monteith, a noted artist from Elkhart.

Two events on Aug. 28

NIPS will have a tent at Arts in Bloom, Wellfield Botanic Gardens, Elkhart, 9 a.m. to 5 p.m. Aug. 28. Music, food and art booths will be featured. This is the second year for this new art fair, and at least 25 regional artists have reserved tent space. Volunteers are needed to staff our tent and paint on site. Bring art to sell and enter a contest for best of show. Contact **Cathy McCormick** to participate. (574) 271-6919 or email: camccorm@aol.com



...and Art Beat will be 11 a.m. to 6 p.m. Aug. 28 in downtown South Bend. Our pastel society will not have a group booth this year, but individual artists and small groups are encouraged to participate. Details and registration: artbeatsouthbend.org

Show calendar

Arts in Bloom, Wellfield Botanical Gardens, Elkhart, Aug. 28

Spencer Gallery, downtown Mishawaka Public Library, Sept. 1–30

Jewish Federation of South Bend, Sept. 19–Oct. 31
Reception and awards Oct. 3, 2–4 p.m.

South Bend Civic Theatre, January through March 2011.

Fernwood Botanical Gardens, Niles, Mich., April 4–May 30, 2011.

Previous meeting

Robert Hoffman of Merrillville demonstrated a dunes landscape using Rembrandt pastels on Wallis sanded paper. He did a drawing in pastel, brushed water over it and dried it by rolling a roll of paper towels over it. He uses full-stick Rembrandts on the end, not on the side. His main colors for the dunes are yellow ochre and blue violet. He also gave a demo on simultaneous contrast using cards he made. Many thanks to Bob for the program.



Image courtesy hoffmanart.com

Winning bid

The set of 225 Rembrandt pastels in a wooden box, donated by **Phil Monteith**, now graces the studio of **Janice Lampos**. Janice submitted the winning bid of \$350 for the set at the June meeting. Congratulations to Janice, and many thanks to Phil.

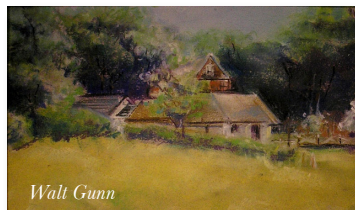
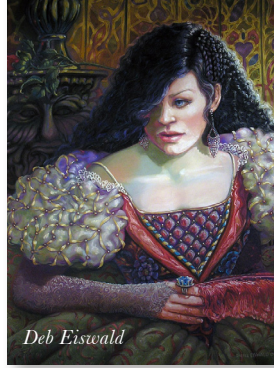
Summer show

Thank you to the 34 artists who participated in the membership show at Studio Arts in June and July. Awards went to

Deb Eiswald, Walt Gunn, Patty Rose, Peggy Vaughan and Bob Williams.

Congratulations.

The judge was Robert Hoffman.



GLPS winners

Great Lakes Pastel Society 2010 national show winners are available for viewing on the website. glps.org/gallery.asp

Member news and opportunities

Fernwood landscape workshop

“Trees, Wonderful Trees” will be the topic of a pastel workshop by **Cathy McCormick** on Sept. 18 from 10 a.m. to 4 p.m. at Fernwood Botanical Gardens, Buchanan, Mich. Cost is \$45 for Fernwood members, \$55 others. Details: (269) 695-6491.

Ron Monsma shows

Ron Monsma will be artist in residence and have a solo exhibition Sept. 11 to Oct. 10 at Hillsdale College, Hillsdale, Mich. The show opens Saturday, Sept. 11, with a reception from 2–4 p.m. and an artist lecture from 4–5 p.m.

Ron will have work in the 2010 Contemporary Realism Biennial Exhibit Sept 3–Nov. 7 at Ft. Wayne Museum of Art, Ft. Wayne.

He also will have work in the figurative exhibition in September at Thaddeus Cutler Gallery, LaPorte, and he will have a solo exhibition of new work starting Oct. 22 at Miller Gallery, Cincinnati, Ohio.

Teaching

Cheryl Ann Spran is teaching pastels at the LaGrange Art League Gallery and Studio, LaGrange, Ill. For more info: Lagrangeartleague.org

Classes in New Buffalo

White Birch Gallery at Buffalo Books, New Buffalo, Mich., offers a studio space to artists who wish to teach or demonstrate their art in public. Space can be scheduled for a week or weekend and you may display your work for sale.

There is no fee for using the studio, but there is a commission for class fees and art sold. The space will hold 6–8 students. Artists can work on the front porch also. Hours are 11 a.m. to 7 p.m. daily. For info, contact Susan Henshaw, (269) 469-2018.

Susan will teach several workshops at Buffalo Books:

Aug. 14 and 15, 9 a.m. to 1 p.m.

Techniques for Painting Water in Pastel, \$120

Aug. 28 and 29, 9 a.m. to 1 p.m.

Painting the Landscape in Pastel, \$120

Aug. 20, 4–7 p.m., *Drawing Fun*, \$25

Aug 13 and 20, 4–7 p.m.

Free pastel demonstrations

Fall classes starting

Pastel and drawing classes are offered at Studio Art Classes, South Bend Museum of Art, Battell Community Center, Forever Learning, Indiana University South Bend, Bethel College, Elkhart Art League, Buchanan Art Center, and other locations. Check individual websites or artseverywhere.com

Good website

Janet Gilbert suggests the website Emptyeasel.com which features demos and business info as well as “Artists Helping Artists,” a new internet radio show.

Classes in Goshen

Art classes will be held this fall at the Lily Art Center Studio, Greene and Berkey, 2211 Berkey Ave, Goshen. Also, classroom space is available to rent at \$25 for a 3-hour block of time. For more information contact Janis Martin (574) 825-7787 or see watercoursewaydesign.com

Watercolor show

St. Joe Valley Watercolor Society is having a juried members’ exhibit at Fernwood Gardens Aug. 1 to Sept. 19, with a reception on Sept. 19 from 2–4 p.m.

Hospital seeks art

Lakeland HealthCare, St. Joseph, Mich., will have a jury Aug. 30 for its visiting artist display area. Artwork must be submitted by Aug. 27. For details contact Patty Reddy (269) 927-5394

Workshop and retreat on Leelanau Peninsula

Great Lakes Pastel Society President Mary Fuscaldò and Susie Nichols, owner of Fountain Point Resort on Lake Leelanau, Mich., are organizing a Pastel Workshop/Retreat, Sept. 21–23. Participants can arrive on the 20th and leave on the 24th in order to explore the beautiful peninsula.

Fountain Point is listed on the National Historic Register and is a wonderful spot for painting. Go to fountainpointresort.com then click on the Blog to download the reservation form. Mary promises a reception Monday evening, three days of painting and three evenings of fellowship, fun, and sharing.

From the Fort Wayne area

Whitley County Autumn Art Fest, Sept. 11 WCAAF is looking for more artists to participate. Whitley County is west of Fort Wayne. <http://www.wcaaf.org/>

Plein Air in Roanoke, Ind., Oct. 9 Juried by Fort Wayne Museum of Art's executive director, Charles A. Shepard, this event is open to all levels of artists. Prizes are \$250, \$175. discoverroanoke.org/events



Win a masterpiece

Five prize-winning artists have donated five masterful paintings to the Pastel Society of America painting raffle. Included are Doug Dawson, Elizabeth Mowry, Sangita Phadke, Frederick Somers, and Sally Strand. The drawing will take place at the end of the PSA awards reception on Sept. 26. The proceeds will benefit the Flora B. Giffuni Atelier for Pastels. You can view the paintings and purchase tickets to the raffle on the PSA website: pastelsocietyofamerica.org

Need digital images of your art?

Baffled by digital photography? Wish you knew how people get their artwork on websites? Mona Witt will scan artwork for members to create digital images for websites and Arts Everywhere. If you already have digital images, Mona would like them for the NIPS page on the Arts Everywhere website. Email Mona for the details: mona50@comcast.net

Printing needs?

In need of a good quality printer for your art prints and note cards? Several members have had their works printed at Duley Press in Mishawaka. Mary Firtl recommends calling Reggie Lowenhar at (574) 259-5203 to inquire about pricing. Mention you're a pastel society member and receive a discount on your cost.

For set-up of your images in press-ready files for standard size greeting cards or 8 x 10 prints, Mary will offer her design services at a discounted hourly rate. Contact her at: firtldove@aol.com for more information.

Pastel Pointers

Pastel Journal offers comments by Richard McKinley at <http://pastel-pointers.pasteljournal.com>

Another source of info is Artistsnetwork.tv which has samples of workshops you can watch to decide if you want to purchase the online workshop.

ArtsEverywhere

Mona Witt continues to send updates so the community can learn about our meetings and events at artseverywhere.com

See you at the next meeting and enjoy the rest of your summer.

Keep painting and remember to send Cathy your news, images, and updates for the next newsletter in September.