

Northern Indiana Pastel Society

October 2007

Meeting:

Northern Indiana Pastel Society
Meeting 1 p.m. Sunday, Oct. 21, 2007
Studio Arts Center,
807 Lincoln Way West, South Bend, Indiana

Please bring a pastel painting to show. It can be finished or a work in progress. Donations of cookies, crackers and cheese, fruit etc. for our refreshment table are welcome.

At the business meeting, we will discuss the two exciting shows planned for 2008. After the business meeting, there will be an excellent program:

ArtsEverywhere demystified

Elena David will demonstrate how to get our art events listed on the community web site. Haven't you always wanted to know how to do this?

Shows in 2008

South Bend Regional Museum of Art has given us a show in summer 2008. We will be the only local group featured there next year, and this should be great exposure for our group. The show will be in the Community Gallery, which can accommodate about 40 pieces of medium size. Members will be eligible to submit art for jurying and prizes as selected by Richard McDaniel, our workshop presenter from Santa Rosa, Calif. Show dates will be June 7 to Sept. 7 with the reception on June 6 at 5 p. m. Jurying will be during the week of the McDaniel workshop, May 5-9.

Studio Arts Center will host our all-member show in November and December 2008 in Galleries 807 and 805. All members will get the opportunity to show a piece for this exhibit, which will allow us to fill Studio Arts Center with pastels.

Bylaws

Bylaws are being finalized. We will need to fill positions on the board of directors. Please consider whether you can accept a board position. Your ideas are welcome, and we promise to keep the meetings short.

Applications for nonprofit status will be the next step, allowing us to accept donations from patrons. Then we hope to apply for membership in International Association of Pastel Societies.

Richard McDaniel Workshop planning Slide program:

Richard will show slides of his work, and we will host a reception in his honor Wednesday, May 7, 2008, open to members and patrons.

Accommodations:

We have reservations for Richard at the Inn at St. Mary's at a reasonable rate. But if you have a connection to a hotel or condo that would give us free accommodations, please let us know. The money we save will stay in the treasury.

Workshop

Plans continue for the McDaniel workshop, May 5 to 9, 2008. The cost will be \$475 per participant. A minimum of 10 will be needed. Richard will lead the class in pastel landscape painting outdoors in several locations, including around the lakes on the Notre Dame campus. Richard has a Notre Dame MFA and he was featured in the new book, *Notre Dame Inspirations* by Hannah Storm.

Show jurying

Richard will jury a show for us while he's in town free of charge, which could bring more money into our treasury if we charge a show entry fee. We hope to find some sponsors for cash prizes for the show. Suggestions and comments are welcome.

December party ideas?

Last December we had a festive reception at the South Bend Regional Museum of Art. What can we do this year? Your ideas will be welcome at the meeting.

Northern Indiana Pastel Society Membership Dues

Those on our current roster will renew membership in February 2008. New members are welcome, and dues of \$20 can be sent to **Sue Coultas**, 519 Woodruff, Niles, MI 49120. suecoultas@comcast.net.

Pastel Pointers

Pastel Journal offers comments by Richard McKinley at <http://pastel-pointers.pasteljournal.com/>.

Examples of pastel animal portraits plus tips on photographing pets by **Sarah Theophilus** <http://www.petsinpastel.com/>.

Member news

Mary Ann Pals has been juried in as an associate member of the Pastel Society of America. Her pastel, "Faces of Africa," was on the cover page of the Great Lakes Pastel Society's 10th anniversary newsletter (Sept/Oct edition). www.glps.org.

Her prize-winning pastel, "Midnight Snack" is included in a new CD by F & W Publishing, *The Best Art of 2005/2006*. It is available through www.fwmagazines.com.

Mary Ann had a pastel painting accepted into "The Best and The Brightest Juried Art Show at the Scottsdale Artists School". All work can be viewed online during the show (Oct. 17-Nov. 16) at www.scottsdaleartschool.org.

Jan Gilbert, Bill Jensen and Cathy McCormick will have a show at Studio Arts Center starting Nov. 15. **Cathy McCormick** won a purchase award at the annual regional show, Midwest Museum of American Art, Elkhart, through Dec. 9.

Several members will have work in the Student/Faculty Exhibition Oct. 27, 2007 to Jan. 27, 2008 at South Bend Regional Museum of Art: **Mary Firtl, Barbara Stephenson, Pat Stutsman, Dave Turnock, Peggy Vaughn, Donna Chambers, Kay Londergan, Clarence Witsken, Vonnie Meyer, Peg Luecke, John Roper, Mary Beth DiGann, Cathy McCormick** and others.

Web site

Look to www.NIpastelsociety.org for events, shows, past newsletters and a list of committees. Please tell prospective members.

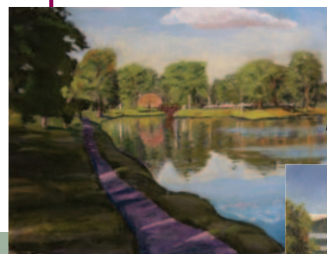
ArtsEverywhere.

Mona Witt continues to send updates so the community can learn about our meetings and events at www.artseverywhere.com.

Member Showcase

When you visit the NIPS website you'll find several fine examples of our members' work such as the images shown below. Remember, when you have digital photos taken of any new pieces you've recently completed, please send to Cathy McCormick so that they can be posted on our website.

Marie Arch



Clarence Witsken



Peg Luecke